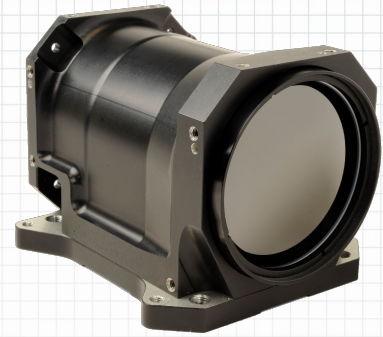


LWIR Dual/Triple FOV – commercial off the shelf lens

BARKAT

LWIR 45/135 mm Dual FOV

Lens with DSP controller for 25 / 17μ detectors



FEATURES / APPLICATIONS / CAPABILITIES

- The ultimate lens for medium to long range surveillance systems at various applications
- Optimized for relatively short total track and low weight
- Supports detector types: 384 x 288 x 25μ pitch and 640 x 480 x 17μ pitch

PARAMETER		VALUE	NOTES
Main	Sub		
🔍 OPTICAL			
Focal Length / F#		45/135 mm / F1.1-1.6	Nominal values.
Detector (FPA) type / size		640 x 480 pixles x 17 microns	Max FPA effective area is: 10.88 mm W x 8.16 mm H (13.6 mm diagonal)
		384 x 288 pixels x 25 microns	
FOV (degrees)		Wide: 13.8°(H) x 10.3° (V) Narrow: 4.6° (H) x 3.4° (V)	For detector size of 640 x 480 pixles x 17μ
		Wide: 12.2°(H) x 9.2° (V) Narrow: 4.1° (H) x 3.1° (V)	For detector size of 384 x 288 pixels x 25μ
Optical Coatings			
	All internal surfaces	High efficiency AR coating	Average transmission: 92%
	Front surface	Hi durability AR coating	DLC is available upon request
Optical Total lens track		150 mm	Front element vertex to FPA, Nominal Value
⚙️ MECHANICAL			
Mechanical Back Focal Length		Min. 9.24 mm	Request MICD for details. Other distances available
Zoom mechanism / Focus		Motorized	With single motor
Total Weight		1,600 gram	Nominal
Structure		Environmentally sealed configuration	
External Dimensions		98mm W x 110mm H x 142mm Length (Please refer to MICD for details)	
💡 ELECTRICAL			
Power Input		12VDC, 0.5A	Nominal
Communication Protocol		RS-422/232 Full Duplex	Default is RS422; Baud rate 19,200, n, 8, 1
🌿 ENVIRONMENTAL			
Operating/Storage Temperature		-30°C to +60°C / -40°C to +70°C	
Shock and Vibrations		Per applicable standard	
Sealing		IP67	By default